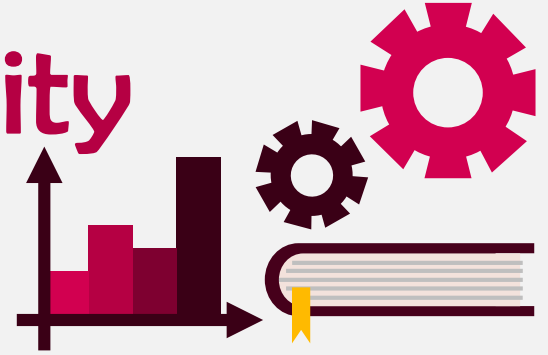


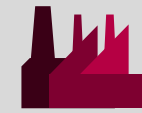
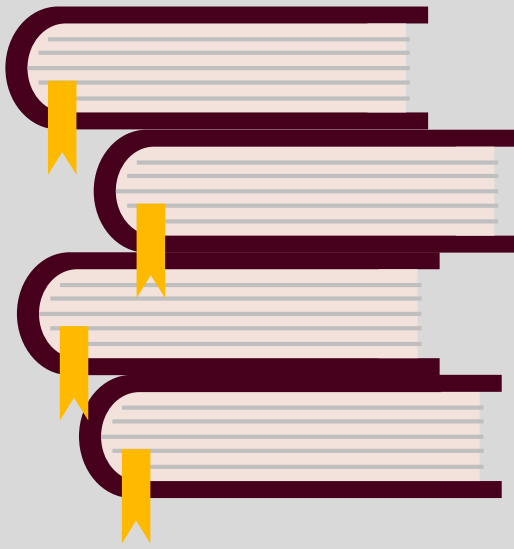


# Santa Clara University Class of 2012

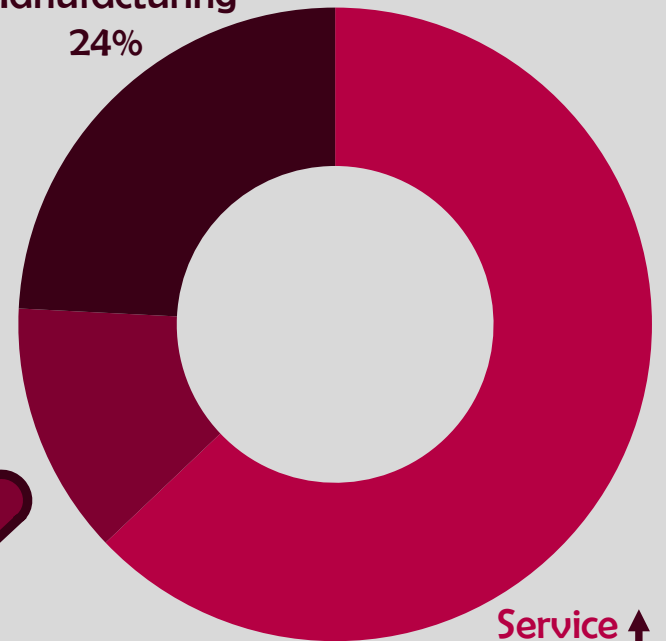


## Workforce Statistics

## Sectors of Employment<sup>1</sup>



Manufacturing  
24%



Non-Profit  
13%

Service  
63%



Note: Percentages may not add to 100 due to rounding

## Graduates Rate



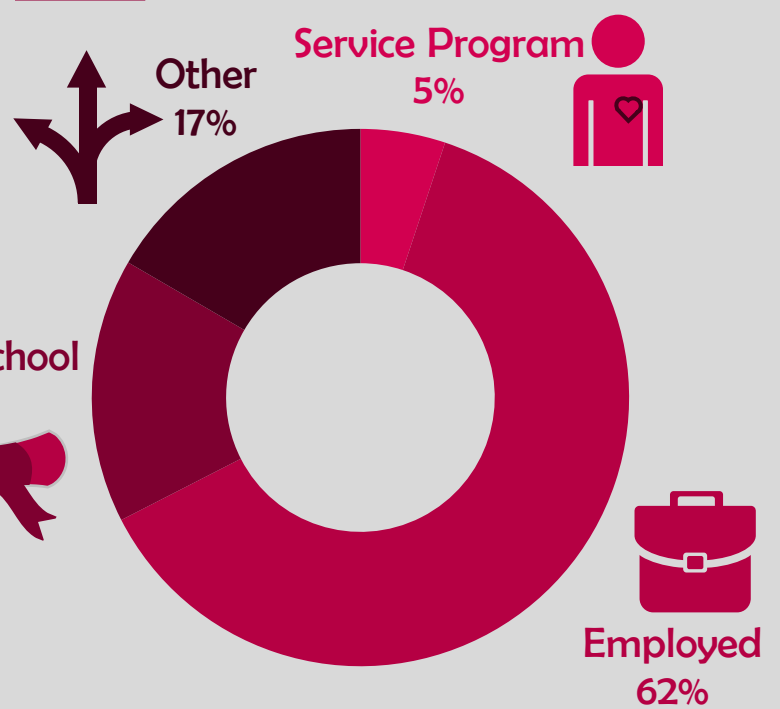
Good to Excellent preparation for...

Career<sup>1</sup> 89%

Life after College<sup>2</sup> 89%

Graduate Study<sup>3</sup> 97%

## Where Are They Now?



**20%** Granted one or more fellowships, teaching assistantships, and/or research assistantships<sup>3</sup>

**96%** Admitted to at least one graduate program<sup>4</sup>

<sup>1</sup> of those working, <sup>2</sup> all graduates, <sup>3</sup> of those attending graduate school, <sup>4</sup> of those who applied for graduate study, <sup>5</sup> of graduates in the job market

The Santa Clara Survey of recent graduates connects employment, education, civic, and satisfaction outcomes to measure the impact of a Santa Clara education. Conducted annually at six-months post-graduation, the 40.6% response rate yields a profile that is representative of the graduating class. Initiated with the class of 2008, these longitudinal data track Santa Clara's progress to ensure an education of citizens and leaders of competence, conscience, and compassion.

Source: first-time, four-year graduates responding to the Survey of Recent Graduates in 2012. For additional information, see [www.scu.edu/ir/data/student-outcomes](http://www.scu.edu/ir/data/student-outcomes) or contact: [institutionalresearch@scu.edu](mailto:institutionalresearch@scu.edu)

# Santa Clara University Class of 2012

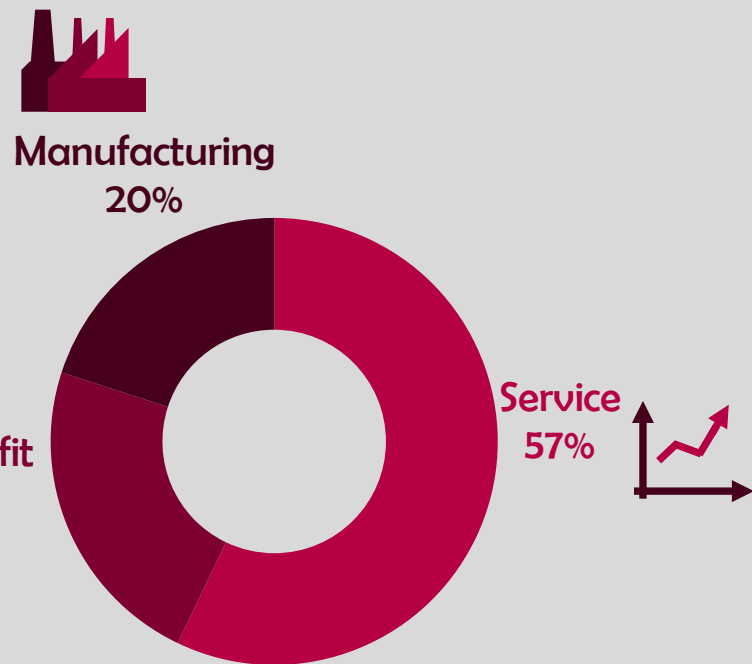
College of Arts and Sciences

Arts and Humanities

## Workforce Statistics



## Sectors of Employment<sup>1</sup>



Note: Percentages may not add to 100 due to rounding

## Graduates Rate

SCU

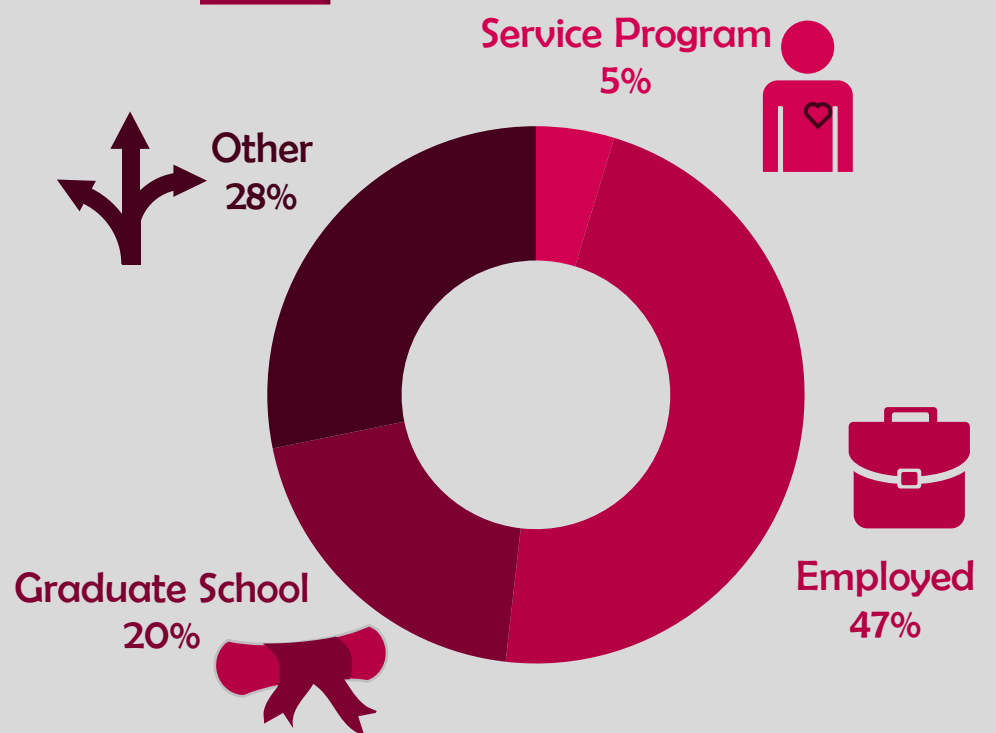
Good to Excellent preparation for...

Career<sup>1</sup> 92%

Life after College<sup>2</sup> 92%

Graduate Study<sup>3</sup> 100%

## Where Are They Now?



17%

Granted one or more fellowships, teaching assistantships, and/or research assistantships<sup>3</sup>

95%

Admitted to at least one graduate program<sup>4</sup>

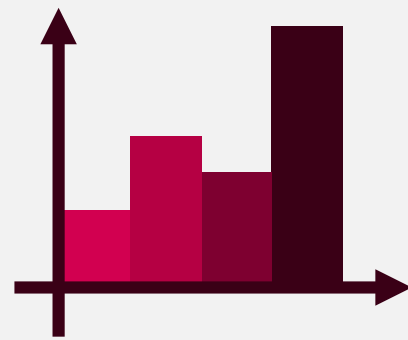
<sup>1</sup> of those working, <sup>2</sup> all graduates, <sup>3</sup> of those attending graduate school, <sup>4</sup> of those who applied for graduate study, <sup>5</sup> of graduates in the job market

The Santa Clara Survey of recent graduates connects employment, education, civic, and satisfaction outcomes to measure the impact of a Santa Clara education. Conducted annually at six-months post-graduation, the 40.6% response rate yields a profile that is representative of the graduating class. Initiated with the class of 2008, these longitudinal data track Santa Clara's progress to ensure an education of citizens and leaders of competence, conscience, and compassion.

Source: first-time, four-year graduates responding to the Survey of Recent Graduates in 2012. For additional information, see [www.scu.edu/ir/data/student-outcomes](http://www.scu.edu/ir/data/student-outcomes) or contact: [institutionalresearch@scu.edu](mailto:institutionalresearch@scu.edu)



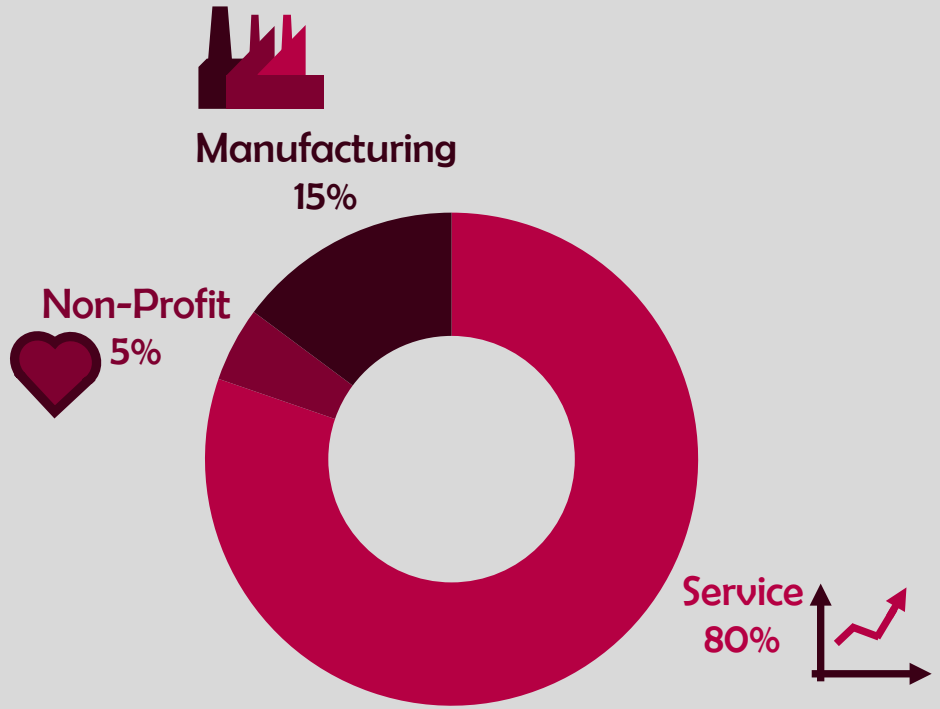
# Santa Clara University Class of 2012



## Leavey School of Business

### Workforce Statistics

### Sectors of Employment<sup>1</sup>



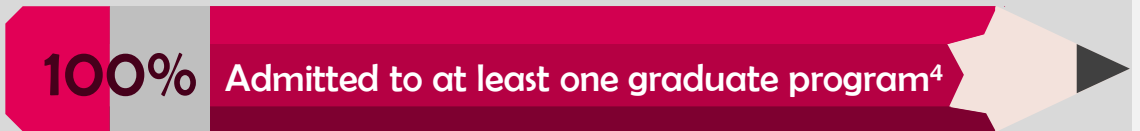
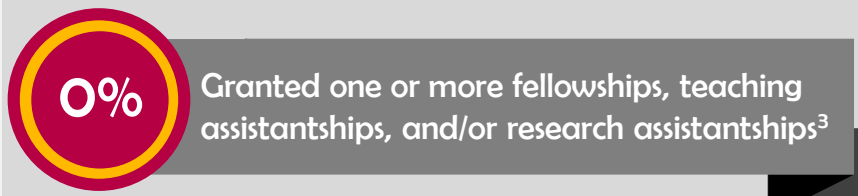
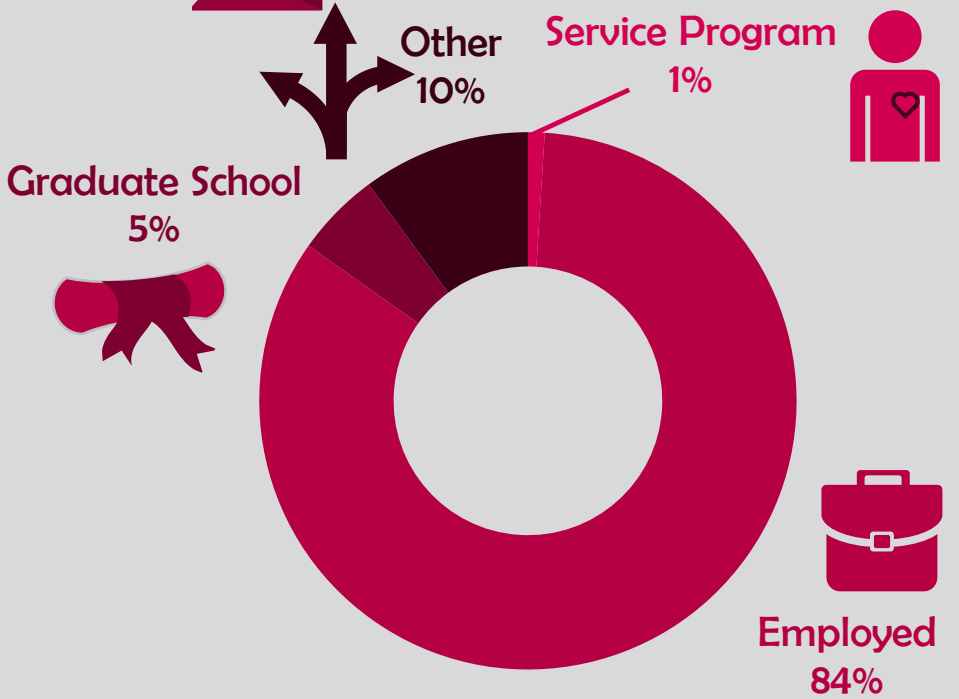
Note: Percentages may not add to 100 due to rounding

### Graduates Rate



- Good to Excellent preparation for...
  - Career<sup>1</sup> 96%
  - Life after College<sup>2</sup> 93%
  - Graduate Study<sup>3</sup> 100%

### Where Are They Now?



<sup>1</sup> of those working, <sup>2</sup> all graduates, <sup>3</sup> of those attending graduate school, <sup>4</sup> of those who applied for graduate study, <sup>5</sup> of graduates in the job market

The Santa Clara Survey of recent graduates connects employment, education, civic, and satisfaction outcomes to measure the impact of a Santa Clara education. Conducted annually at six-months post-graduation, the 40.6% response rate yields a profile that is representative of the graduating class. Initiated with the class of 2008, these longitudinal data track Santa Clara's progress to ensure an education of citizens and leaders of competence, conscience, and compassion.

Source: first-time, four-year graduates responding to the Survey of Recent Graduates in 2012. For additional information, see [www.scu.edu/ir/data/student-outcomes](http://www.scu.edu/ir/data/student-outcomes) or contact: [institutionalresearch@scu.edu](mailto:institutionalresearch@scu.edu)

# Santa Clara University Class of 2012

School of Engineering

## Workforce Statistics

82%

Are Employed<sup>5</sup>

\$62,500

Median Salary

## Sectors of Employment<sup>1</sup>

Manufacturing  
59%

Service  
38%

Non-Profit  
3%

Note: Percentages may not add to 100 due to rounding

## Graduates Rate

SCU

Good to Excellent preparation for...

Career<sup>1</sup> 76%

Life after College<sup>2</sup> 80%

Graduate Study<sup>3</sup> 91%

## Where Are They Now?

Graduate School  
21%

Other  
13%

Service Program  
3%

Employed  
64%

32%

Granted one or more fellowships, teaching assistantships, and/or research assistantships<sup>3</sup>

95%

Admitted to at least one graduate program<sup>4</sup>

<sup>1</sup> of those working, <sup>2</sup> all graduates, <sup>3</sup> of those attending graduate school, <sup>4</sup> of those who applied for graduate study, <sup>5</sup> of graduates in the job market

The Santa Clara Survey of recent graduates connects employment, education, civic, and satisfaction outcomes to measure the impact of a Santa Clara education. Conducted annually at six-months post-graduation, the 40.6% response rate yields a profile that is representative of the graduating class. Initiated with the class of 2008, these longitudinal data track Santa Clara's progress to ensure an education of citizens and leaders of competence, conscience, and compassion.

Source: first-time, four-year graduates responding to the Survey of Recent Graduates in 2012. For additional information, see [www.scu.edu/ir/data/student-outcomes](http://www.scu.edu/ir/data/student-outcomes) or contact: [institutionalresearch@scu.edu](mailto:institutionalresearch@scu.edu)

# Santa Clara University

## Class of 2012

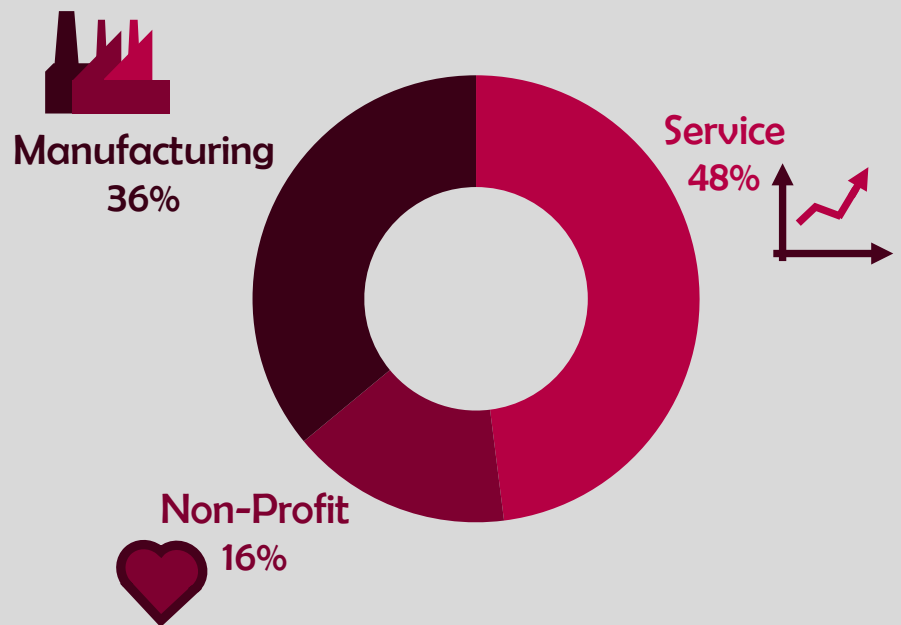
College of Arts and Sciences

Math and Natural Sciences

### Workforce Statistics



### Sectors of Employment<sup>1</sup>



Note: Percentages may not add to 100 due to rounding

### Graduates Rate



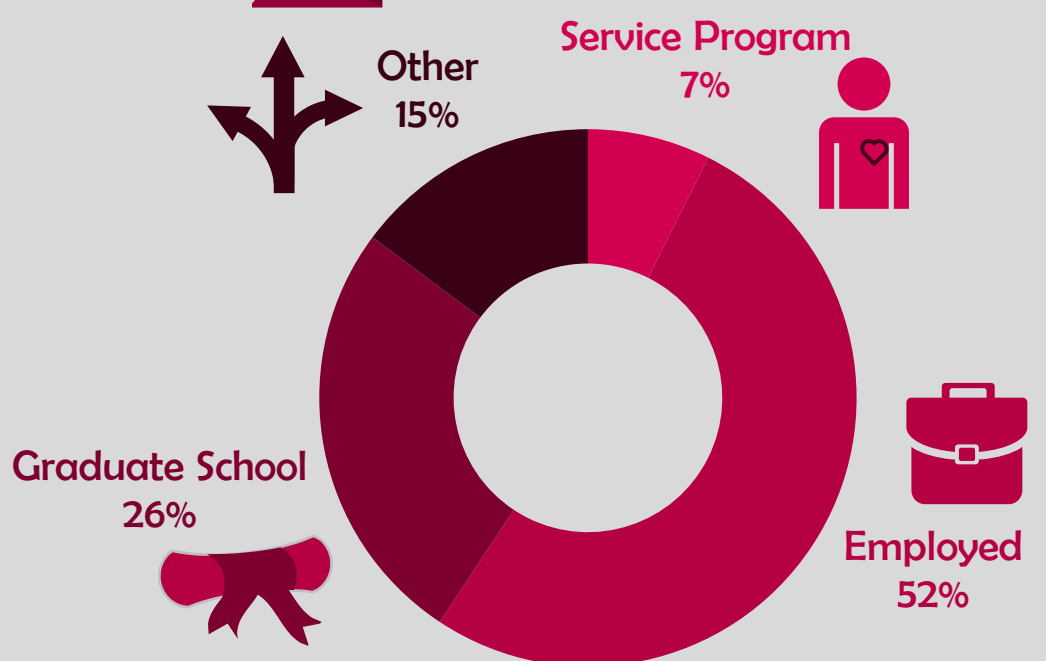
Good to Excellent preparation for...

Career<sup>1</sup> 96%

Life after College<sup>2</sup> 95%

Graduate Study<sup>3</sup> 100%

### Where Are They Now?



**36%** Granted one or more fellowships, teaching assistantships, and/or research assistantships<sup>3</sup>

**100%** Admitted to at least one graduate program<sup>4</sup>

<sup>1</sup> of those working, <sup>2</sup> all graduates, <sup>3</sup> of those attending graduate school, <sup>4</sup> of those who applied for graduate study, <sup>5</sup> of graduates in the job market

The Santa Clara Survey of recent graduates connects employment, education, civic, and satisfaction outcomes to measure the impact of a Santa Clara education. Conducted annually at six-months post-graduation, the 40.6% response rate yields a profile that is representative of the graduating class. Initiated with the class of 2008, these longitudinal data track Santa Clara's progress to ensure an education of citizens and leaders of competence, conscience, and compassion.

Source: first-time, four-year graduates responding to the Survey of Recent Graduates in 2012. For additional information, see [www.scu.edu/ir/data/student-outcomes](http://www.scu.edu/ir/data/student-outcomes) or contact: [institutionalresearch@scu.edu](mailto:institutionalresearch@scu.edu)

# Santa Clara University Class of 2012

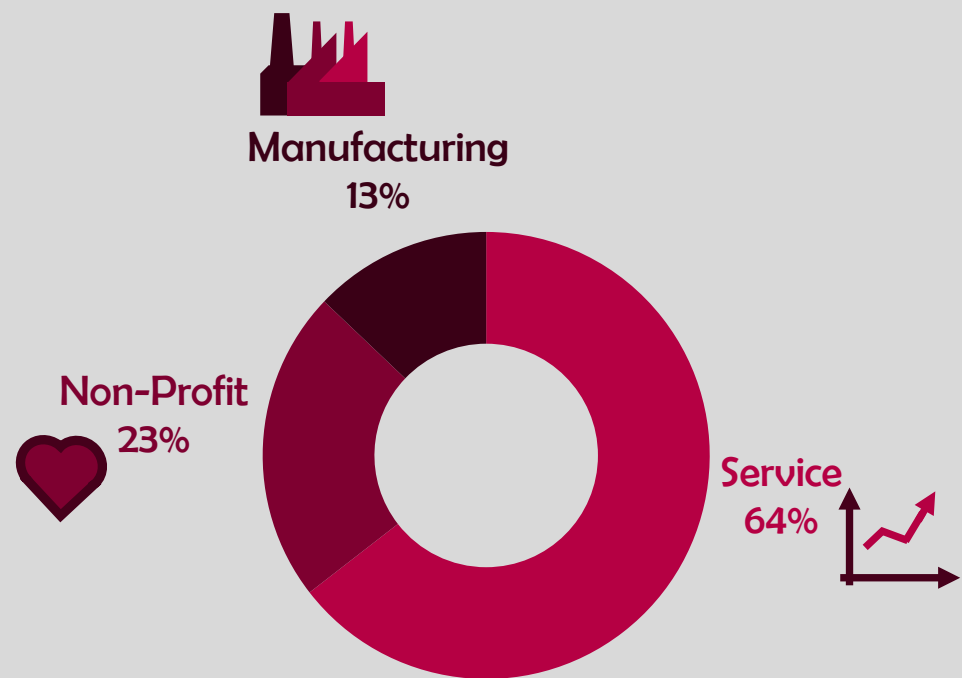
College of Arts and Sciences

Social Sciences

## Workforce Statistics



## Sectors of Employment<sup>1</sup>



Note: Percentages may not add to 100 due to rounding

## Graduates Rate



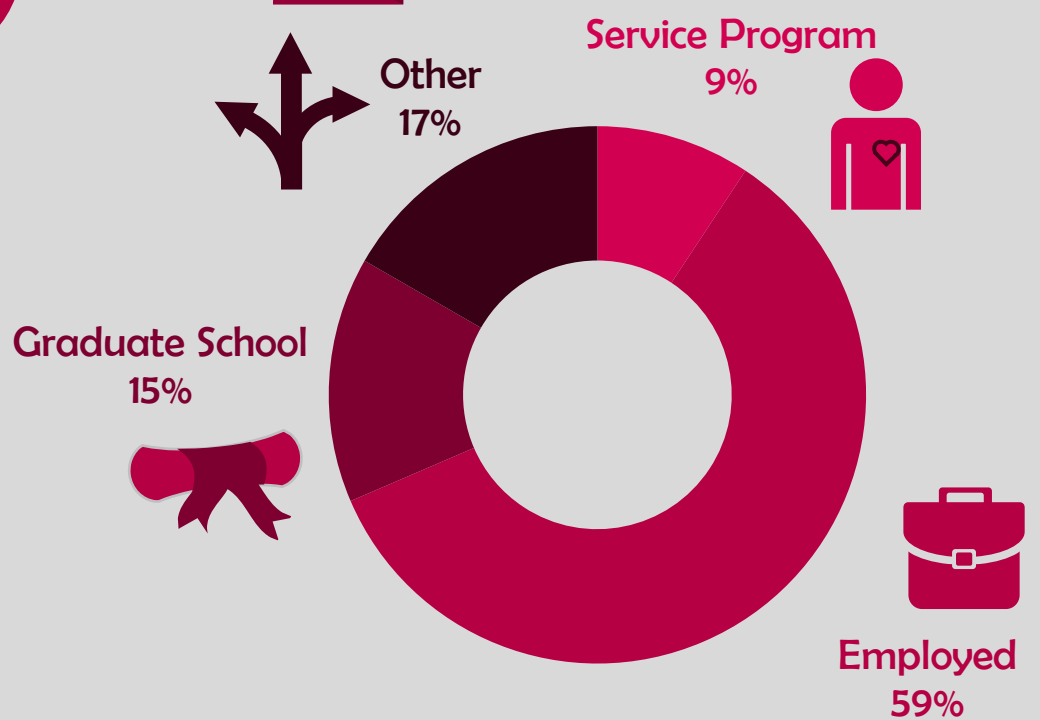
Good to Excellent preparation for...

Career<sup>1</sup> 83%

Life after College<sup>2</sup> 87%

Graduate Study<sup>3</sup> 93%

## Where Are They Now?



**5%**

Granted one or more fellowships, teaching assistantships, and/or research assistantships<sup>3</sup>

**95%**

Admitted to at least one graduate program<sup>4</sup>

<sup>1</sup> of those working, <sup>2</sup> all graduates, <sup>3</sup> of those attending graduate school, <sup>4</sup> of those who applied for graduate study, <sup>5</sup> of graduates in the job market

The Santa Clara Survey of recent graduates connects employment, education, civic, and satisfaction outcomes to measure the impact of a Santa Clara education. Conducted annually at six-months post-graduation, the 40.6% response rate yields a profile that is representative of the graduating class. Initiated with the class of 2008, these longitudinal data track Santa Clara's progress to ensure an education of citizens and leaders of competence, conscience, and compassion.

Source: first-time, four-year graduates responding to the Survey of Recent Graduates in 2012. For additional information, see [www.scu.edu/ir/data/student-outcomes](http://www.scu.edu/ir/data/student-outcomes) or contact: [institutionalresearch@scu.edu](mailto:institutionalresearch@scu.edu)