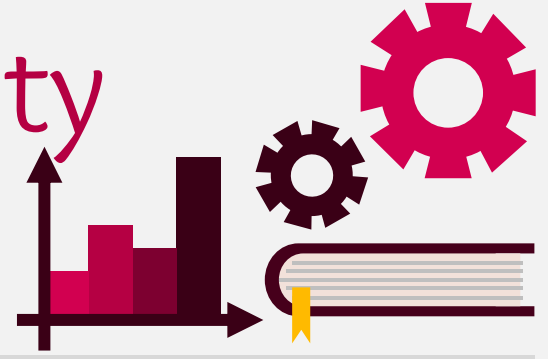


# Santa Clara University Class of 2022

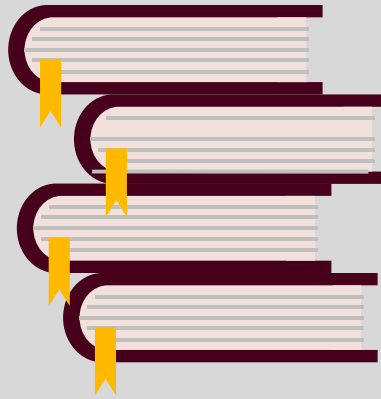
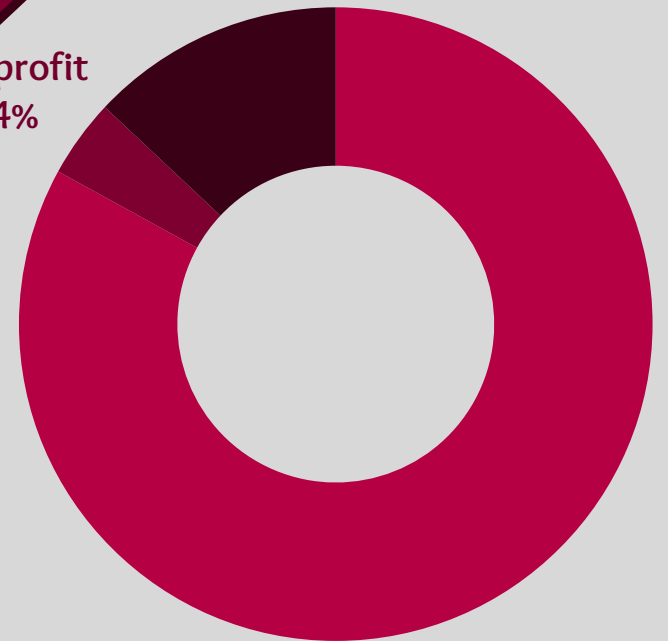


## Workforce Statistics

## Sectors of Employment<sup>1</sup>



Public/Government  
13%



Private, for-profit  
83%



Note: Percentages may not add to 100 due to rounding

## Graduates Rate

SCU

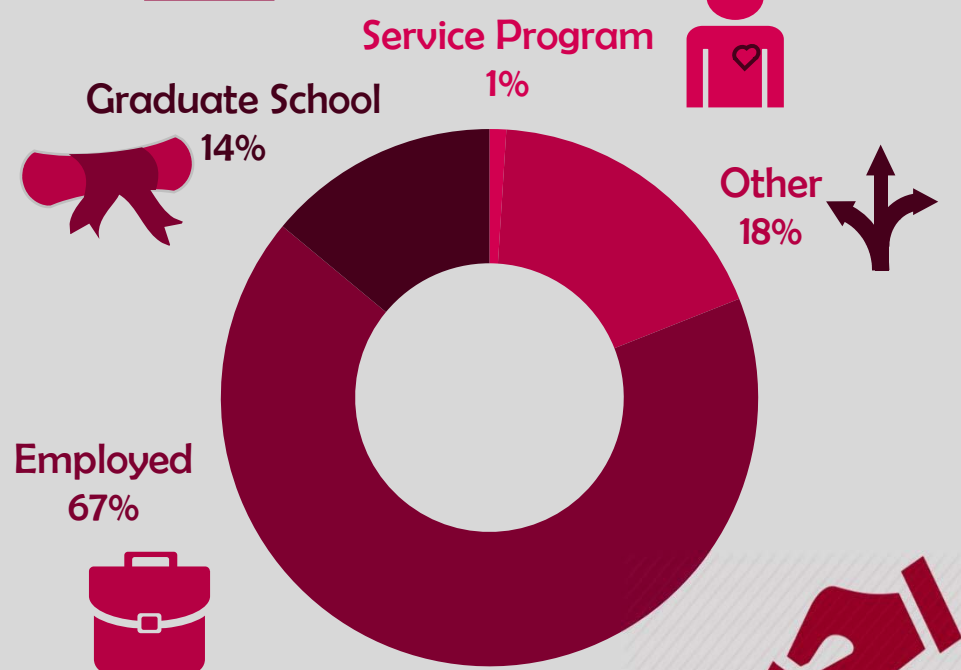
Good to Excellent preparation for...

Career<sup>1</sup> 75%

Life after College<sup>2</sup> 71%

Graduate Study<sup>3</sup> 87%

## Where Are They Now?



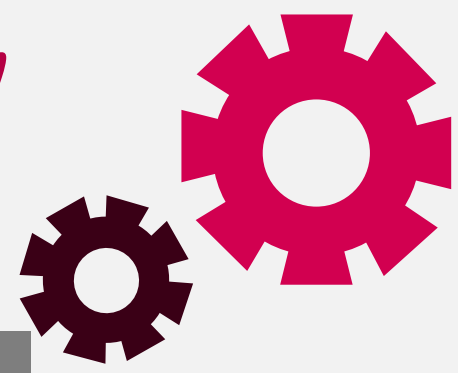
32% Granted one or more fellowships, teaching assistantships, and/or research assistantships<sup>3</sup>

Voted in most recent national or state election

72%

<sup>1</sup> of those working, <sup>2</sup> all graduates, <sup>3</sup> of those attending graduate school, <sup>4</sup> of those who applied for graduate study, <sup>5</sup> of graduates in the job market

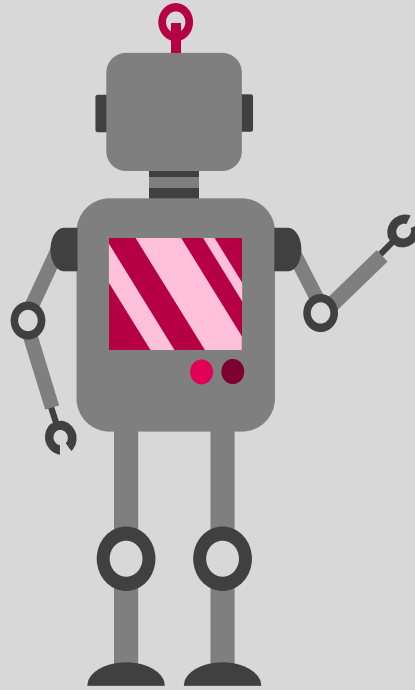
# Santa Clara University Class of 2022



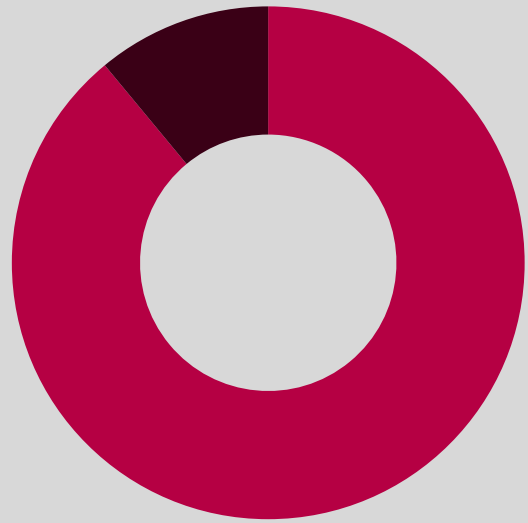
School of Engineering

## Workforce Statistics

## Sectors of Employment<sup>1</sup>



Public/Government  
11%



Private, for-profit  
89%



Note: Percentages may not add to 100 due to rounding

## Graduates Rate

SCU

Good to Excellent preparation for...

Career<sup>1</sup> 70%

Life after College<sup>2</sup> 50%

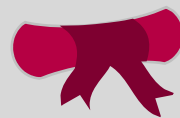
Graduate Study<sup>3</sup> 60%

## Where Are They Now?

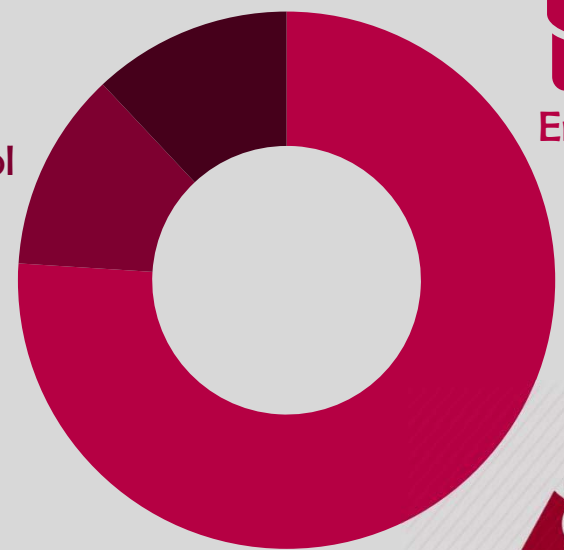
Other  
12%



Graduate School  
12%



Employed  
76%

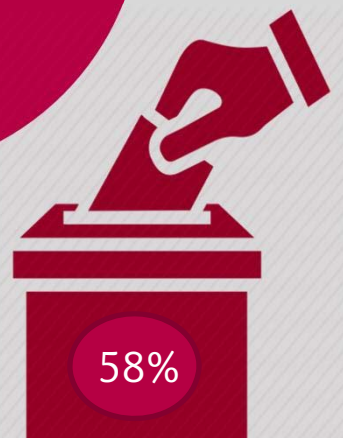


40%

Granted one or more fellowships, teaching assistantships, and/or research assistantships<sup>3</sup>

Voted in most recent national or state election

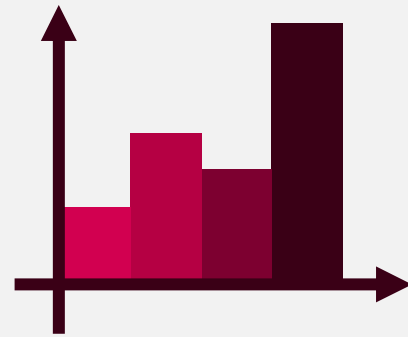
58%



<sup>1</sup> of those working, <sup>2</sup> all graduates, <sup>3</sup> of those attending graduate school, <sup>4</sup> of those who applied for graduate study, <sup>5</sup> of graduates in the job market



# Santa Clara University Class of 2022



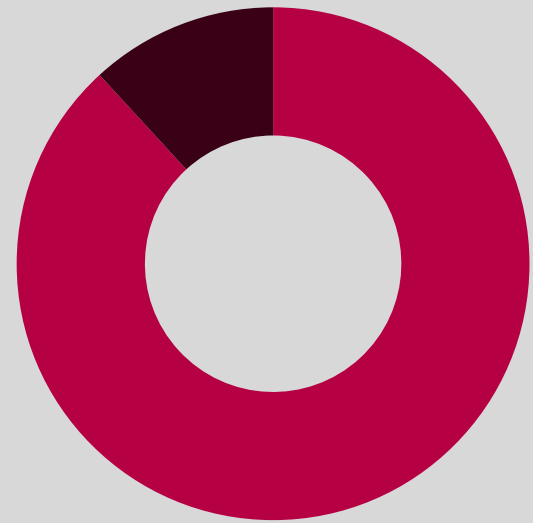
## Leavey School of Business

### Workforce Statistics

### Sectors of Employment<sup>1</sup>



Public/Government  
11%



Private, for-profit  
89%



Note: Percentages may not add to 100 due to rounding

### Graduates Rate

SCU

Good to Excellent preparation for...

Career<sup>1</sup> 83%

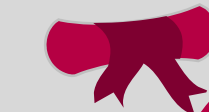
Life after College<sup>2</sup> 83%

Graduate Study<sup>3</sup> 100%

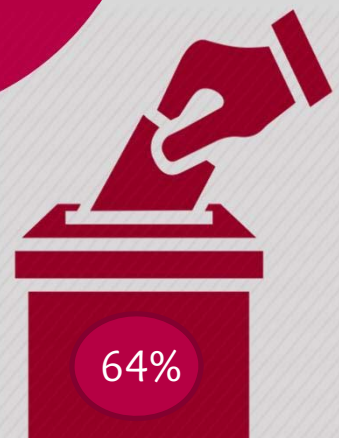
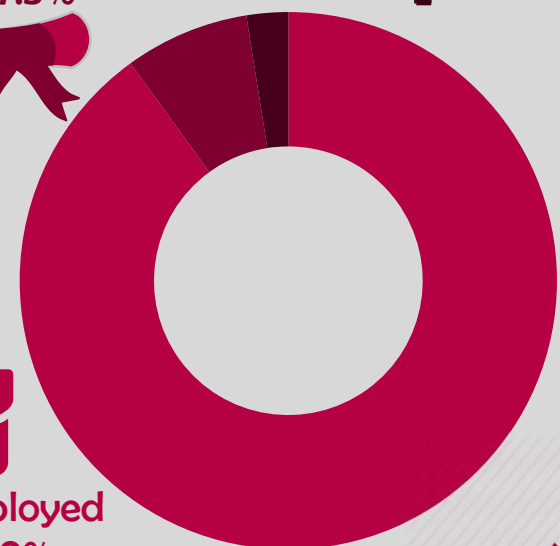
### Where Are They Now?

Graduate School  
7.5%

Other  
2.5%



Employed  
90%



Voted in most recent national or state election

64%

33%

Granted one or more fellowships, teaching assistantships, and/or research assistantships<sup>3</sup>

<sup>1</sup> of those working, <sup>2</sup> all graduates, <sup>3</sup> of those attending graduate school, <sup>4</sup> of those who applied for graduate study, <sup>5</sup> of graduates in the job market

# Santa Clara University Class of 2022

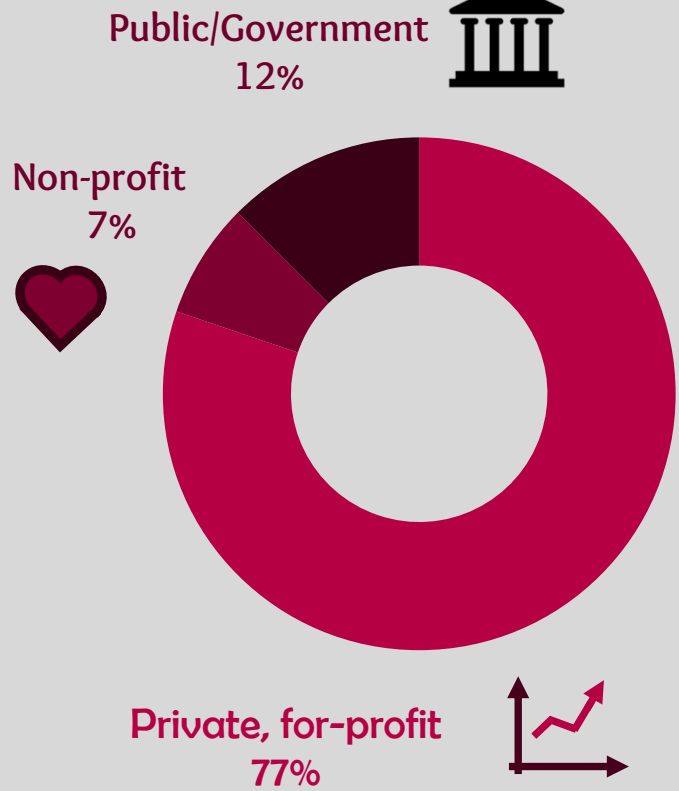
College of Arts and Sciences

## Workforce Statistics

71%  
Are Employed<sup>5</sup>

\$ \$62,200 \$  
Median Salary

## Sectors of Employment<sup>1</sup>



Note: Percentages may not add to 100 due to rounding

## Graduates Rate

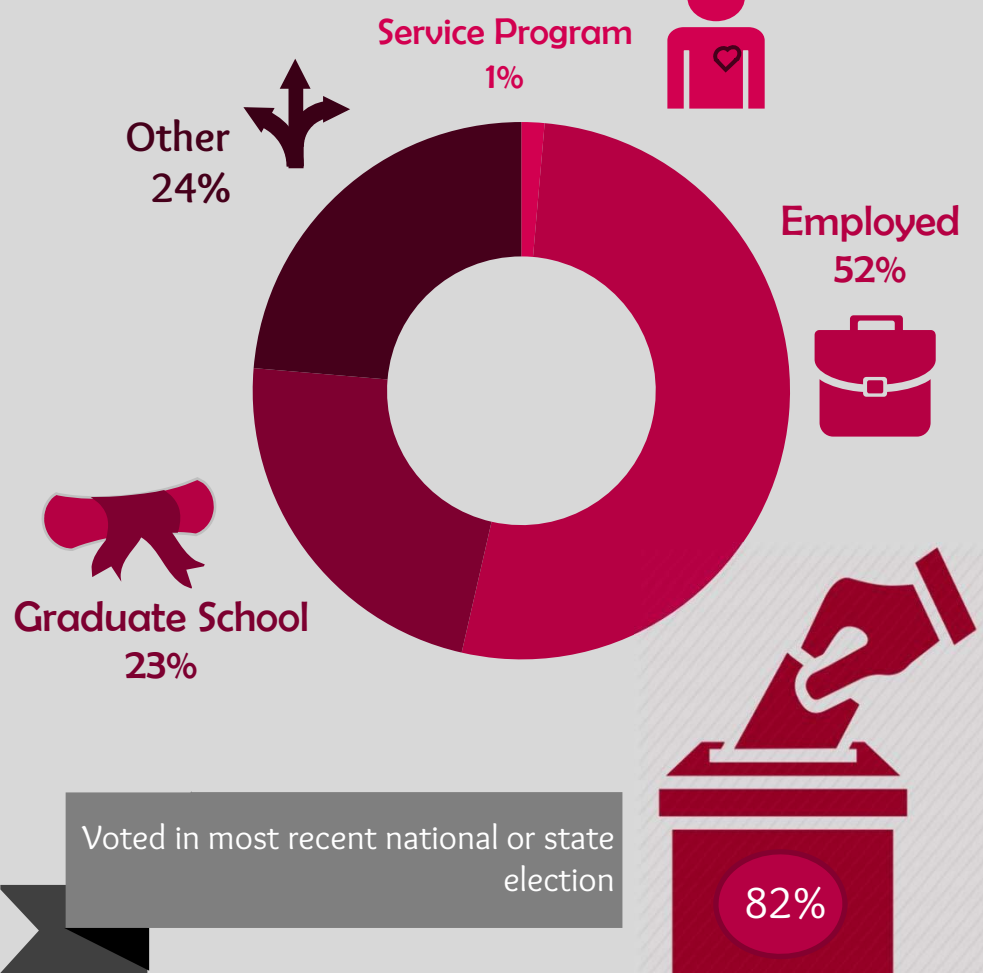
SCU

Good to Excellent preparation for...

- Career<sup>1</sup> 71%
- Life after College<sup>2</sup> 72%
- Graduate Study<sup>3</sup> 93%

29% Granted one or more fellowships, teaching assistantships, and/or research assistantships<sup>3</sup>

## Where Are They Now?



Voted in most recent national or state election

82%

<sup>1</sup> of those working, <sup>2</sup> all graduates, <sup>3</sup> of those attending graduate school, <sup>4</sup> of those who applied for graduate study, <sup>5</sup> of graduates in the job market